

EXHIBIT F

Analysis of Applicant's Shadow Study

Applicant's sun study is:

Incomplete – it leaves out the MOST pertinent information!

For what it does show, there are *CLEAR undue adverse impacts* to the light and shadow cast on neighboring home

Incomplete

Sunrise

Homes to North will, obviously, be most affected



Sunset

Incomplete!!

Applicant's "sun study" cuts off most affected homes!

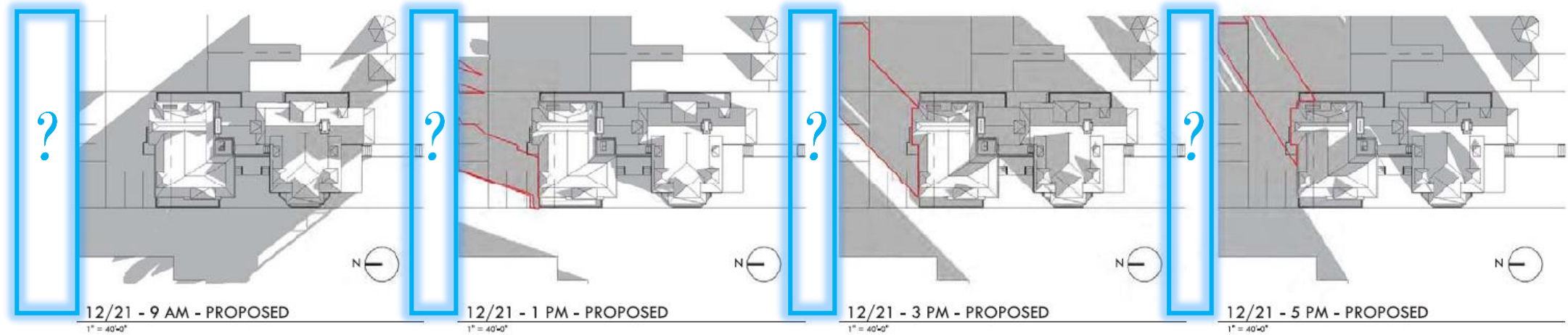


DIAGRAM KEY



CURRENT SHADOW CAST BY SURROUNDING PROPERTIES.

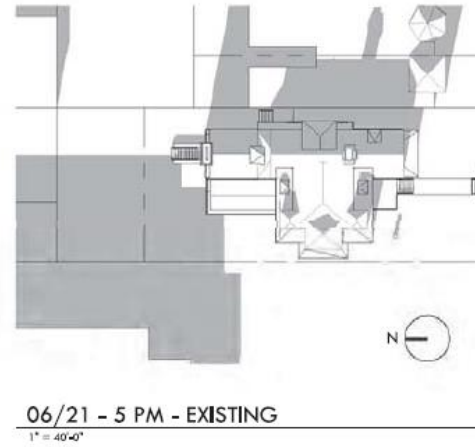
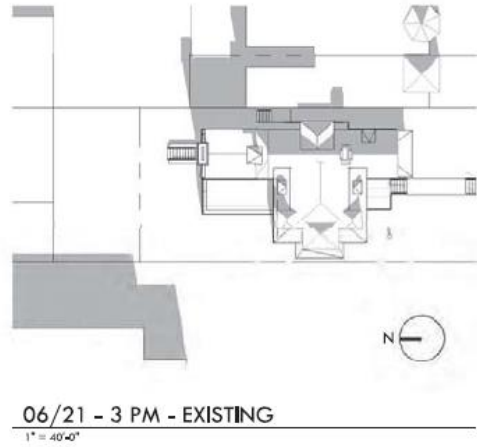


AREA OF SHADOW CAST BY PROPOSED PROJECT.

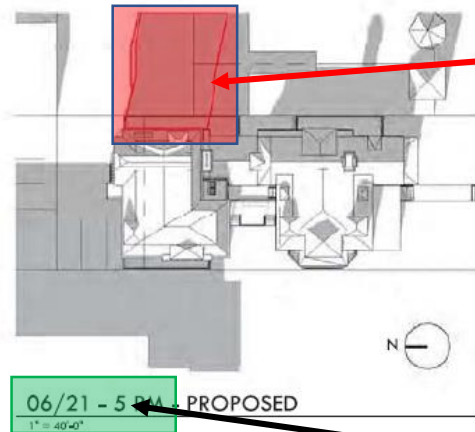
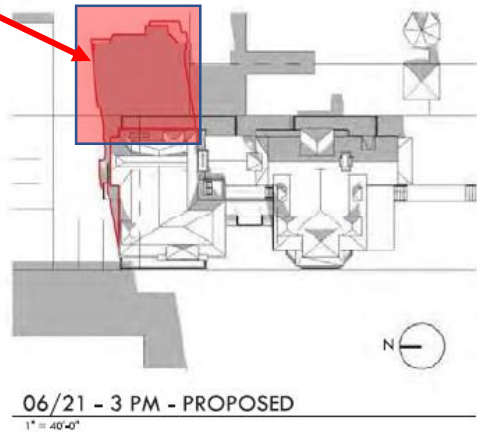


ADDITIONAL AREA OF SHADOW CAST BY PREVIOUS
09.24.2020 DESIGN

Adverse impacts
No more sun in our backyard!



Adverse impacts
No more sun in our backyard!



Incomplete
What about the next three hours of sun light??

SHADOW CAST BY SURROUNDING PROPERTIES.



AREA OF SHADOW CAST BY PROPOSED PROJECT.

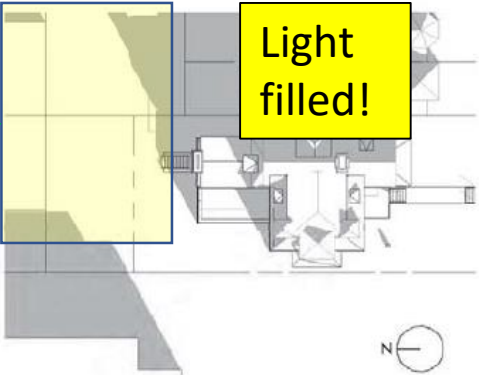


ADDITIONAL AREA OF SHADOW CAST BY PREVIOUS 09.24.2020 DESIGN

Adverse impacts

Existing:

A light-filled open space that all homes enjoy!

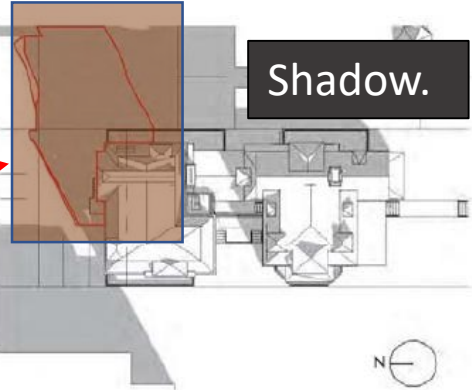


09/21 - 3 PM - EXISTING

1" = 40'-0"

Proposed:

A dark, shadow cast area that will ruin the enjoyment of the rear yards of all the homes on the block



09/21 - 3 PM - PROPOSED

1" = 40'-0"

SHADOW CAST BY SURROUNDING PROPERTIES.



AREA OF SHADOW CAST BY PROPOSED